

Thank You

For Choosing VantecUSA Product.

We are committed to providing you with the best service and support. If you have a problem with installing, getting the product to function or other product related question, please feel free to write to us. We will help you answer your question.

You can write to us at : support@vantecusa.com
For the latest Drivers, Manual and Frequently Asked Questions (FAQ), they are available at our website at vantecusa.com or write to us.

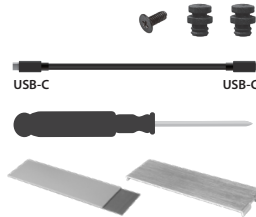


QRCode to product Page,
Drivers, Manual, and FAQ.

Thank you,
VantecUSA Support Team.



Installation Guide



Verify the package contents.

- 1x M.2 NVMe SSD To USB 3.1 Gen 2x1 Type C Syncable RGB Enclosure in a clamshell
- 1x USB C to C Cable
- 1x Heat Transfer Plate
- 1x Thermal Pad
- 1x Screw Driver, 1 x spare casing screw, 2x spare Toolless Rubber Mount in one bag
- 1x Quick Install Guide



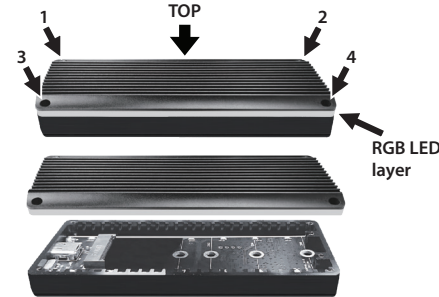
CAUTION

Static Sensitive Devices
Handle with Care

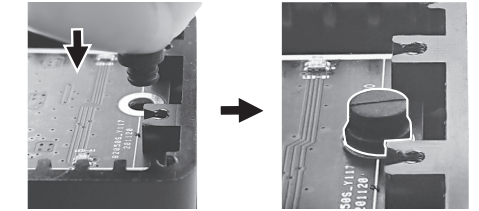
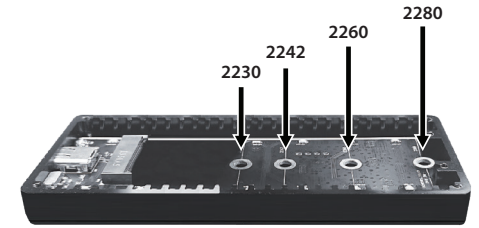
Caution Notice:

Before you unpack your NVMe module and install your NVMe into the enclosure, please be aware that these are sensitive devices and can be damaged by Static Electricity.

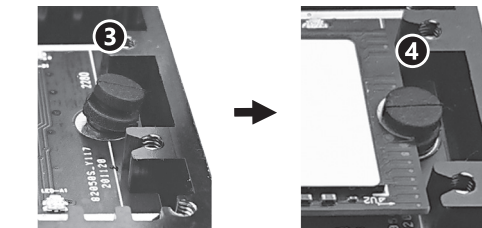
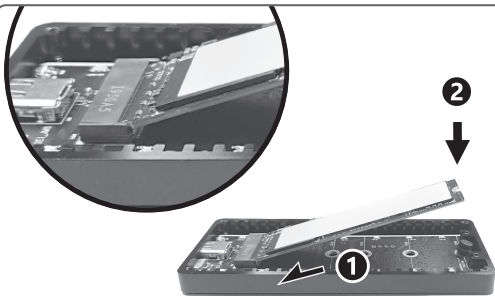
Please ground yourself before handling them and hold the module by the edge of the module.



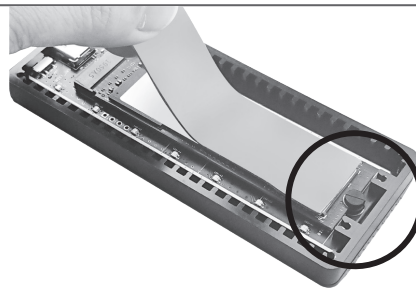
1. Note the TOP casing cover is closes to the RGB LED Layer. Remove the 4 screws shown using the screwdriver and lift off the TOP casing cover and RGB LED layer.



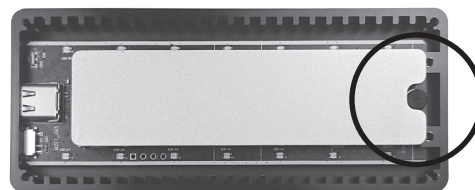
2. The package comes with 3 Toolless Rubber Mount, just need one for mounting your NVMe. Insert the Rubber Mount into the mounting position that matches your NVMe length. If your NVMe length is 2280, insert the Rubber Mount into the mounting hole for 2280 position. Save the two extra if needed for later use, do not lose them.



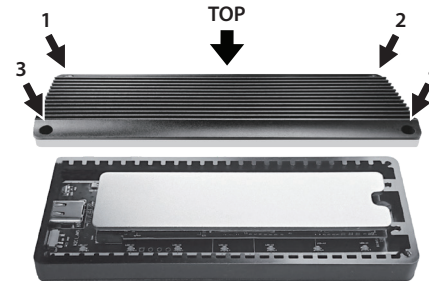
3. 1 Insert your M.2 NVMe into the M.2 socket, your M.2 is keyed with a notch that aligns with the socket. Insert into the socket at an angle, 2 push down the M.2 NVMe. And 3 tilt back the rubber mount, 4 release the rubber mount to hold and lock the M.2.



4. Remove the film protecting the Thermal pad on both sides and place the Thermal pad on top of your M.2 NVMe as shown.



5. Place the provided Heat Transfer Plate on top of the Thermal pad as shown.



6. Place back the casing and RGB LED Layer remove in step #1, and secure using the 4 screws you removed in Step #1.



7. Connect the USB C cable to the enclosure and the Computer System USB C port. The unit is ready to use. If this install M.2 NVMe is new, you will need to use the OS tool to prep the drive (initialize, partition and format). For Windows OS, use Disk Management. For OS X, use Disk Utility.

8. IMPORTANT: If your M.2 NVMe is NOT new and contains important DATA, DO NOT initialize or format the drive.

For detail, instruction refers to the FAQ "How to preparing a New storage, Hard Drive, or SSD for use with a system" on our website support section at www.vantecusa.com

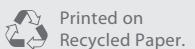
www.vantecusa.com

NST-210C3-RGB

Information in this document is subject to change without notice. Reproduction of these materials in any manner whatsoever without written permission is strictly forbidden.



v1.01



Printed on
Recycled Paper.

Copyright © 2021 Vantec Thermal Technologies. All Rights Reserved.
All Registered Trademarks Belong to Their Respective Companies.